

Best Tagging Practice

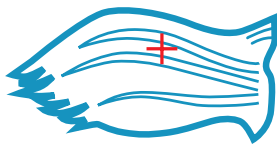
Dalton tags are produced in the UK to the very highest standards but successful Identification is also achieved by paying careful attention to where and how an eartag is applied. With due care and attention retention rates can be increased considerably. We recommend a "Best Tagging Practice".

Store unused tags in a clean dry container and away from frost. Make sure that you or your operator is properly trained and confident in the application of eartags. Read the Health and Safety Executive's advice on handling and housing of livestock.

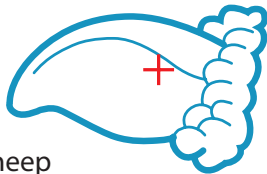
Make sure that you are using the correct applicator for the tag you are applying. Fit in cool weather (where possible) to minimise possible infection and secure the animal's head to prevent jerking during tagging.

Apply tags under hygienic conditions. The operator's hands, the ear, the tag and the applicator should be clean. Disinfect if necessary using an appropriate solution. When fitting plastic tags make sure that the tags line up correctly in the applicator and will lock together when correctly fitted. In most cases it is recommended that the female part of the tag should always be on the inside of the ear, this will reduce the chance of the tag snagging or catching on obstructions such as fences, gates and feeding troughs. The male part of the tag should enter from the back of the ear. Check the ear after about 10 days for signs of damage or infection.

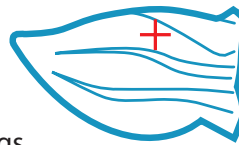
Two-piece tags



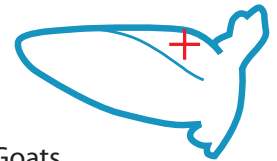
Cattle
Place in centre of ear avoiding veins



Sheep
Insert tag near the base of the ear avoiding veins



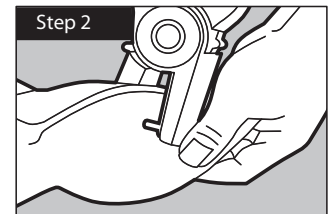
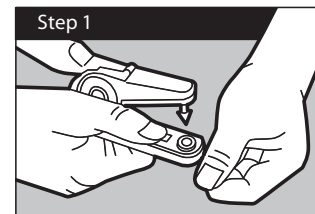
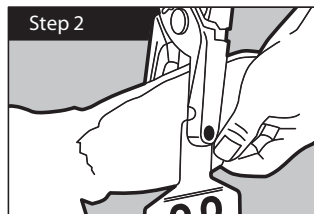
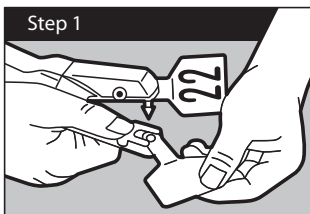
Pigs
tag here avoiding veins and gristle



Goats
Insert tag near the base of the ear towards the top avoiding veins

Note loop / one piece tags should be fitted over the top of the ear allowing room for ear growth.
If in doubt consult local DVO or go to www.defra.gov.uk

Instructions for Supertag & I-Tag

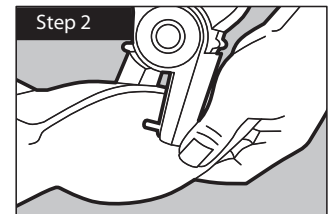
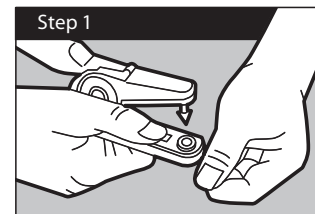


For Help, Advice, Sales Assistance and 24 hour Replacement Tags call;



In United Kingdom
Call **0800 838 882**

Instructions for Rototag



Instructions for Tagomatic

